



LC STEEL SHOT

High durability, low dust, reusable & recyclable Low Carbon steel shot media

Low carbon cast steel shot, best suited for foundry cleaning applications, desanding, deburring or descaling. With its typical lower hardness, this media may last longer than regular high carbon shot, reduce machine wear while maintaining its effectiveness for many demanding industrial applications like removing sand or scale from castings.



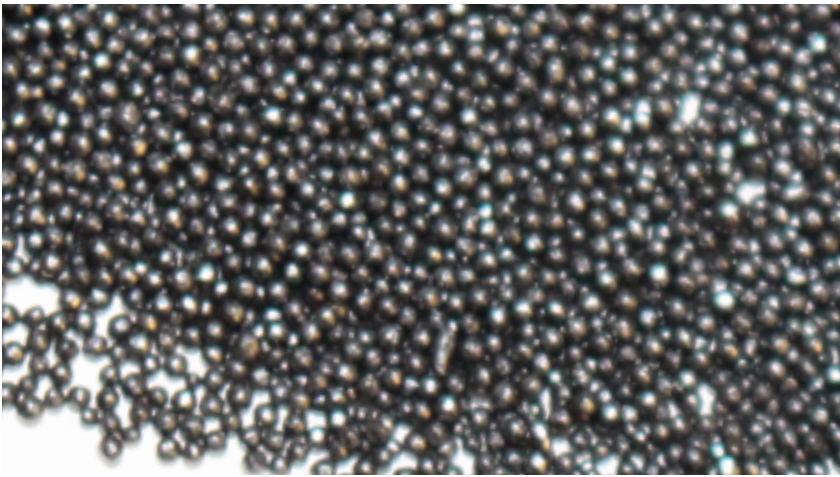
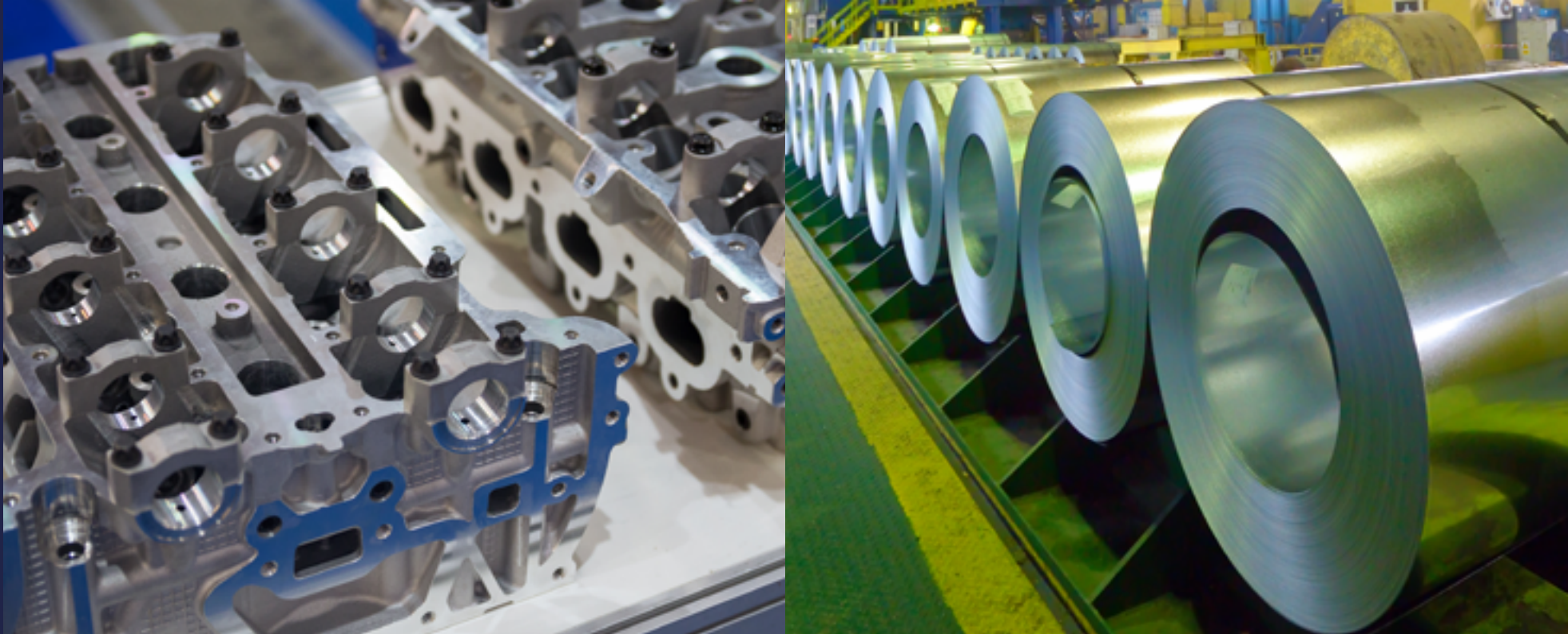
100% Recyclable
& 100% reusable



Homogeneous
microstructure



High durability



USERS BENEFITS

#1 Reduced Wear of Machine & Parts

Due to their lower hardness and breakage, LC steel shot reduces wear on blast wheel blades and blast machine components

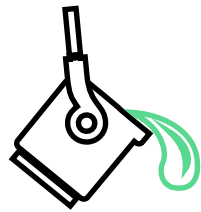
#2 Lower Costs

By achieving a Rockwell hardness of 40 to 50 as-cast, our Low Carbon Steel Shot meets SAE standards without requiring post-casting heat treatments. This streamlined process lowers production costs and enhances operational efficiency

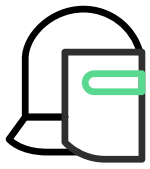
#3 Less dust produced

For regular shot desanding applications, the blasting process with Low Carbon Media produces less dust, which reduces maintenance and filtration system costs.

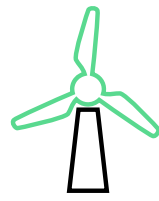
MARKETS AND APPLICATIONS



Foundries



Forges



Wind energy
power system



Automotive

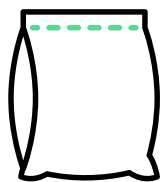


Ballast

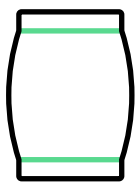


Metal Working

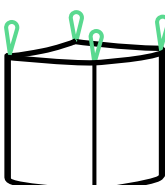
Packaging



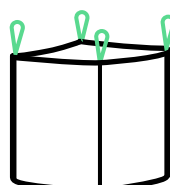
BOXED BAGS



DRUM



BIG BAG
2000 lb



BIG BAG
4000 lb

SPECIFICATIONS

Chemical analysis	C: 0.10–0.15%, Si: 0.10–0.25%, Mn: 1.20–1.50%, Al: 0.05–0.15%, S: ≤0.035%, P: ≤0.035%
Applicable specifications	SAE J2175, J444, SAE J445
Hardness	40-50 HRC (400-540 HV)
Standard deviation	± 3 HRc (± 40 HV)
General appearance	Spherical
Micro-structure	Bainitic microstructure
SAE Sizes available	S-780, S-660, S-550, S-460, S-390, S-330, S-280, S-230, S-170, S-110, S-70
Density	SAE Minimum 7 g/cc Typical: 7.6 g/cc

Product	7	8	10	12	14	16	18	20	25	30	35	40	45	50	80	120	200
S780	AP		85% min	97% min													
S660		AP		85% min	97% min												
S550			AP		85% min	97% min											
S460			AP	5% max	85% min	96% min											
S390				AP	5% max	85% min	96% min										
S330					AP	5% max	85% min	96% min									
S280						AP	5% max	85% min	96% min								
S230							AP	10% max	85% min	97% min							
S170								AP	10% max	85% min	97% min						
S110									AP	10% max		80% min	90% min				
S70										AP	10% max		80% min	90% min			
Screen Number	7	8	10	12	14	16	18	20	25	30	35	40	45	50	80	120	200
Screen Size (mm)	2.80	2.36	2.00	1.70	1.40	1.18	1.00	0.85	0.71	0.60	0.50	0.425	0.355	0.30	0.180	0.125	0.075
Screen Size (inches)	0.111	0.0937	0.0787	0.0661	0.0555	0.0469	0.0394	0.0331	0.0278	0.0234	0.0197	0.0165	0.0139	0.0117	0.007	0.0049	0.0029

Cumulative Size Distribution (%)

*Document for informational purposes only. Not contractual. Contact your local representative for latest version of the technical data sheets.

W Abrasives
by Winoa

