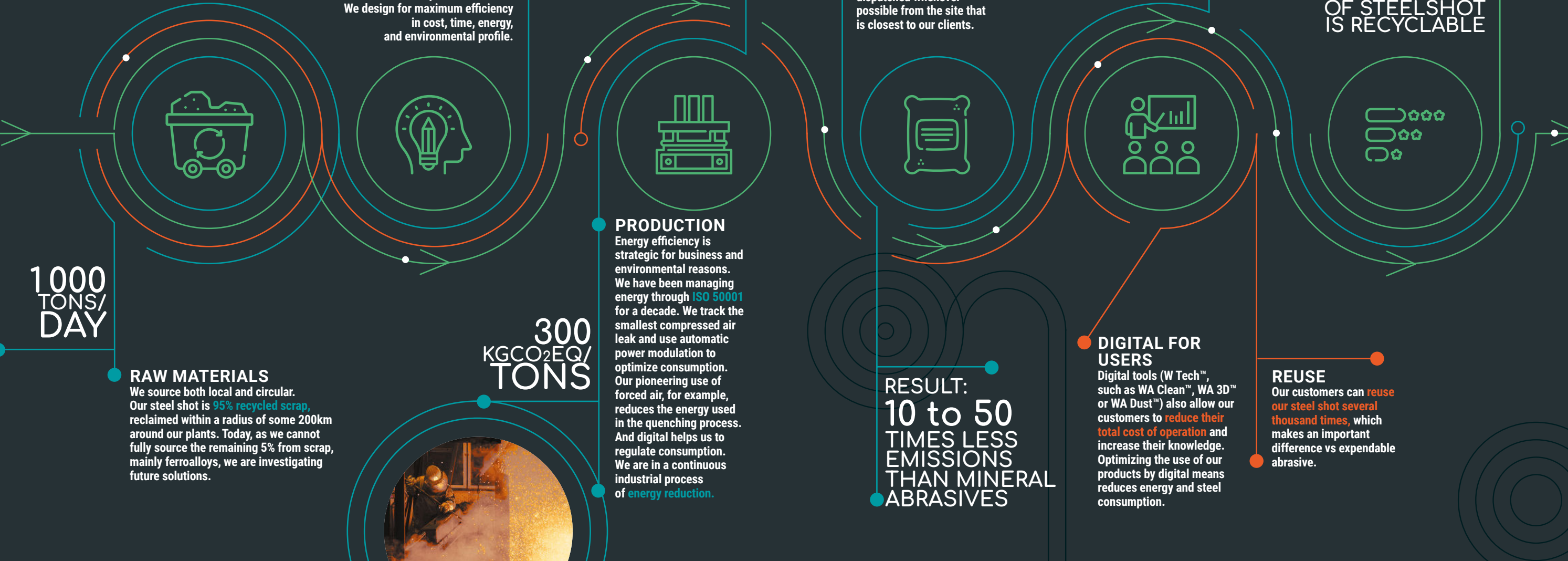


THE LIFE CYCLE OF STEEL SHOT

With over 95% of our raw materials sourced from the **circular economy**, our business model has a strong environmental focus. And every stage of our **product life cycle** plays a key role in driving down our carbon footprint.



1 000
TONS/
DAY

RAW MATERIALS

We source both local and circular. Our steel shot is **95% recycled scrap**, reclaimed within a radius of some 200km around our plants. Today, as we cannot fully source the remaining 5% from scrap, mainly ferroalloys, we are investigating future solutions.



PRODUCT DESIGN

Our shot media is made of proven steel sources to produce **premium, specialty & value-added products**, adapted to client specifics through tailored size, shape and hardness. We design for maximum efficiency in cost, time, energy, and environmental profile.



RE-PURPOSING

96% of our French plant waste is repurposed. Smeltery dust is used as a raw material in zinc production, iron oxide complements mined iron in blast furnaces, and slag is used in the sub-structure of new roads.



PRODUCTION

Energy efficiency is strategic for business and environmental reasons. We have been managing energy through **ISO 50001** for a decade. We track the smallest compressed air leak and use automatic power modulation to optimize consumption. Our pioneering use of forced air, for example, reduces the energy used in the quenching process. And digital helps us to regulate consumption. We are in a continuous industrial process of **energy reduction**.

300
KG CO₂ EQ/
TONS



DISTRIBUTION

Our finished products are distributed in 25kg bags or in bulk bags. They are dispatched whenever possible from the site that is closest to our clients.

RESULT:
10 to 50
TIMES LESS
EMISSIONS
THAN MINERAL
ABRASIVES



USE

We develop new services to enable our customers to **reduce the impact of using our products**: end-user training, machine audits, optimization of blast machines and energy consumption...



DIGITAL FOR USERS

Digital tools (W Tech™, such as WA Clean™, WA 3D™ or WA Dust™) also allow our customers to **reduce their total cost of operation** and increase their knowledge. Optimizing the use of our products by digital means reduces energy and steel consumption.

END OF LIFE

When it has become too small to use, steel shot can be **recycled indefinitely**. This means that the steel we buy as scrap may come from our own production, and the life cycle loop is closed.



100%
OF STEEL SHOT
IS RECYCLABLE

REUSE

Our customers can **reuse our steel shot several thousand times**, which makes an important difference vs expendable abrasive.